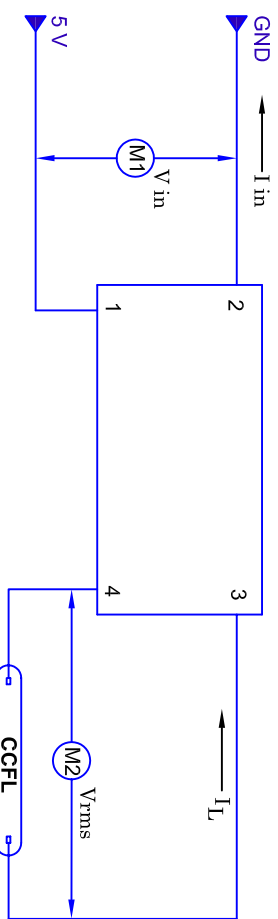
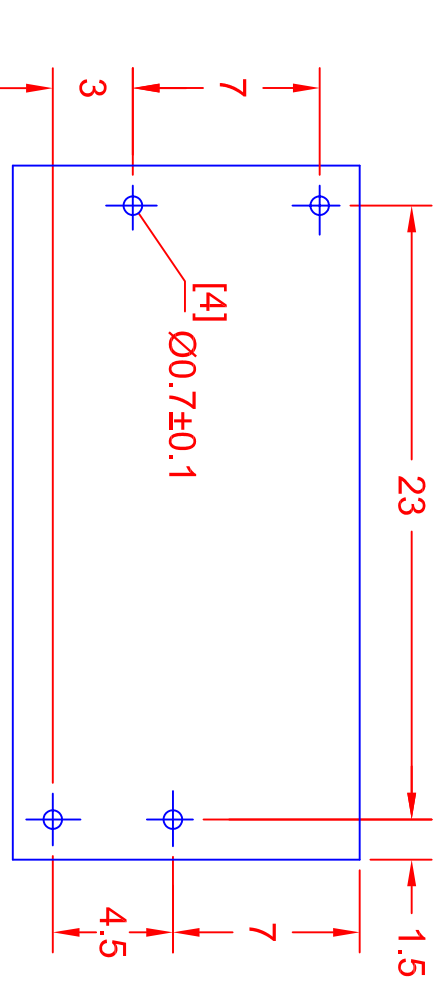
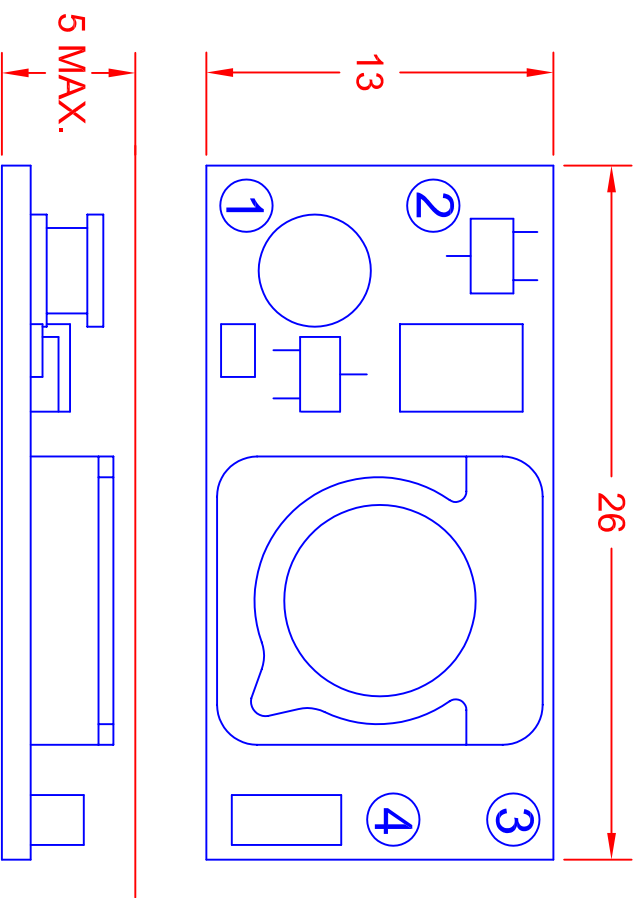


REV.	DESCRIPTION/ECO NO.	DATE
	RELEASED	8/19/97
A	WIRE DIAGRAM CHNGS	10/31/00
B	CONVERT TO CAD	6/6/01
C	ADD HOLE DIA.	3/15/02



CHARACTERISTICS	MIN	TYP	MAX
INPUT VOLTAGE: (vdc)	4.5	5.0	5.5
INPUT CURRENT: (mA)	200	250	300
OUTPUT VOLTAGE: (Vrms)	600	650	700
OUTPUT CURRENT (marms)	4.0	4.5	5.0
OUTPUT FREQUENCY: (KHz)	70	80	90
OPERATING TEMP: (CELSIUS)	0	25	50

BOARD PIN #	INPUT
1	+V (V in)
2	V (GND)
3	OUT GND
4	V OUT

TOLERANCE	
L < 20	±0.2
20 ≤ L < 50	±0.3
50 ≤ L < 100	±0.4
100 ≤ L	±0.5

METRIC THIRD ANGLE PROJECTION		DIMENSIONS ARE IN MILLIMETERS TOLERANCE UNLESS OTHERWISE SPECIFIED 1 PL +/- 0.2 2 PL +/- ANGLE +/- 0	
DRAWN BY L. WENGSTROM	DATE 3/15/02	SIZE A	FSCM NO. 55335
TITLE 5 V CCFL POWER SUPPLY		DRAWING NO. BXA-502	REV. NO. C
- CAD DRAWING - MANUAL REVISIONS NOT PERMITTED		SCALE NONE	SHEET OF
RELEASED DATE 8/19/97	REVISION DATE 3/15/02	REV. NO. C	SHEET OF

JKL COMPONENTS CORPORATION