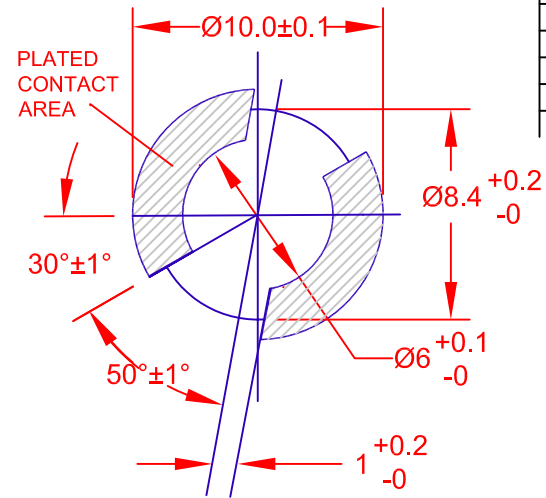
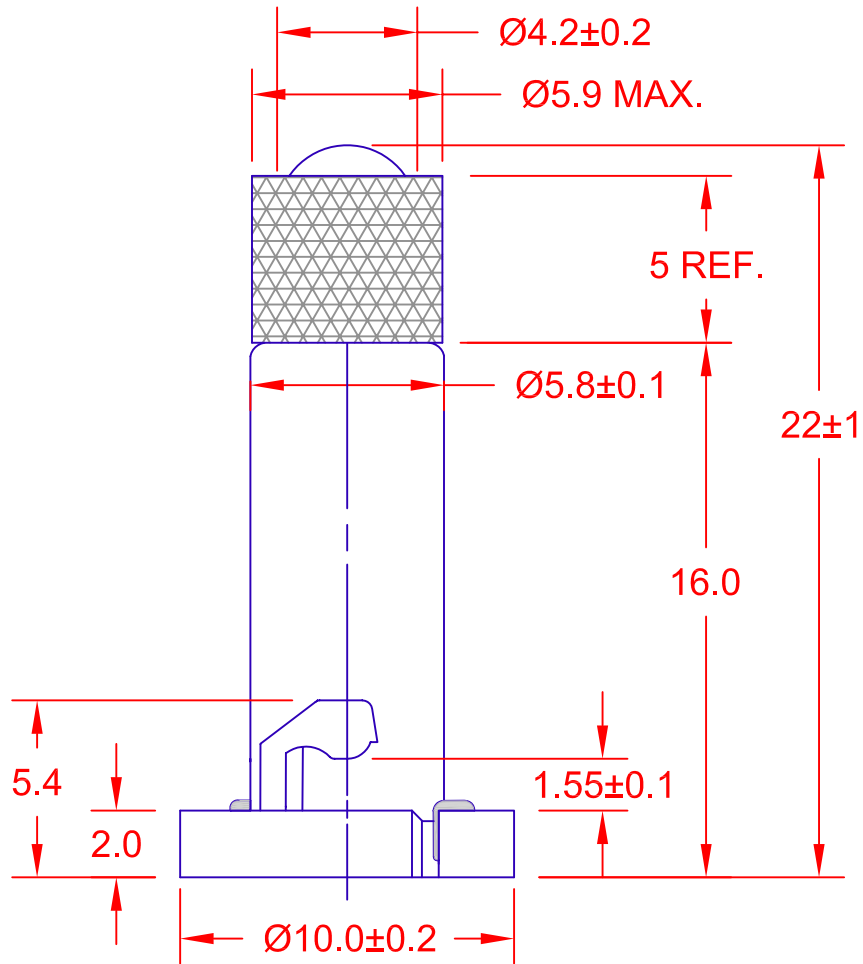


REV.	DESCRIPTION/ECO NO.	DATE
	ENGR. RELEASE TO CAD	7/19/06



PC BOARD PUNCH PATTERN
(NO TREATMENT, SUCH AS APPLICATION OF FLUX, SHALL BE DONE.)

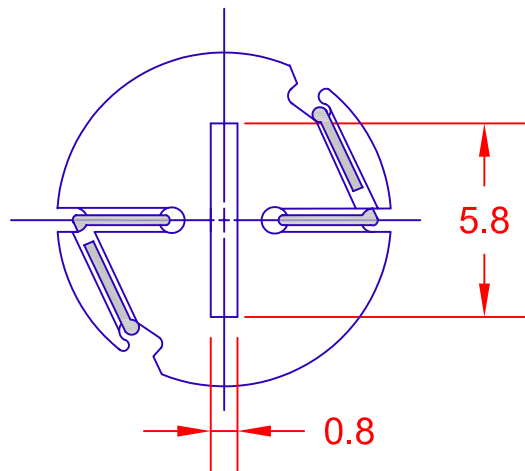
LAMP NUMBER: DW10

VOLTS RATED	AMPS ± 10%	*MSCP ± 25%	*LUMENS ± 25%	AVERAGE LIFE HRS.	FILAMENT TYPE
14.0	.100	.500	6.29	10,000	C-2F

*LAMP RATING ONLY WITHOUT BASE AND FILTER

SLEEVE PART NO: 38-1002

FIBERGLASS WITH BLACK SILICONE RUBBER)



JKL PART NUMBER: DNW1-DW10/GRA22MM/38-1002

METRIC		DIMENSIONS ARE IN MILLIMETERS		JKL COMPONENTS CORPORATION			
 THIRD ANGLE PROJECTION		TOLERANCE UNLESS OTHERWISE SPECIFIED 1 PL +/- 0.2 2 PL +/- 0.20 ANGLE +/- 0		TITLE DNW1 EXTENDED NEO-WEDGE BASE WITH DW10 LAMP AND BLACK SLEEVE			
DRAWN BY L. WENGSTROM	APPV'D BY E.D.	DATE 7/19/06	SIZE A	FSCM NO. 55335	DRAWING NO. DNW1-DW10/GRA22MM/38-1002		
- CAD DRAWING - MANUAL REVISIONS NOT PERMITTED			SCALE NONE	RELEASED DATE 7/19/06	REVISION DATE	REV. NO. 1 OF 1	