

■ Applications

- 1) Lighting for high brightness power LED
- 2) Constant current source

■ Features

- 1) High efficiency and thin package
- 2) Open loop peak current controller
- 3) Terminal for adjustable output current
- 4) PWM dimming capability
- 5) 3pcs 3W LEDs on DC12V driving capability
6pcs 1W LEDs on DC24V driving capability

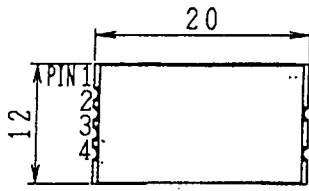
■ Maximum rating and Environment conditions

Item	Symbol	Rating	Unit
DC Input Voltage	Vin	8 ~ 28	V
Input Power	Pin	0 ~ 12	W
Operating Temperature	Ta	0 ~ 60	°C
Storage Temperature	Ts	0 ~ 80	°C
Relative Humidity	RH	5 ~ 95	%

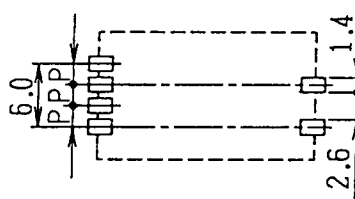
■ Electrical Characteristics Conditions : Ta = 25°C, LED load = 3W LED*3pcs

Item	Symbol	Vin = 12V	Vin = 24V	Unit
Input Current	Iin	510	260	mA
Output Current	IL	600	600	mA
Switching Frequency	fsw	90	315	kHz

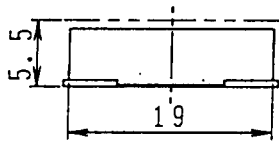
■ Shapes and Dimensions (Unit: mm)



Recommended soldering pad design



P = 2.0
Setting the line under this part is prohibited.



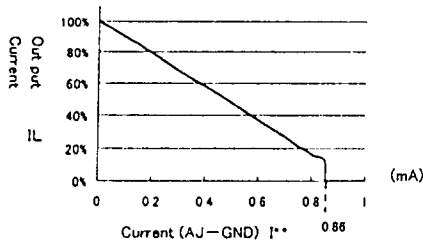
■ Terminal numbers and functions

No.	Symbol	Description
1	Vin	Vin (8~28V)
2	AJ	Current Adjust
3	EN	ENsignal (L-off)
4	GND	GND (0V)
5	OUT+	Output(+)
6	OUT-	Output(-)

■ Warning

Don't set the line under this part.
Short circuit is possibility.

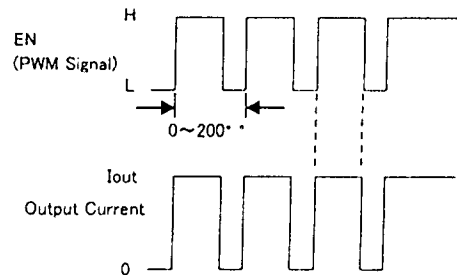
■ Output Current Adjustment



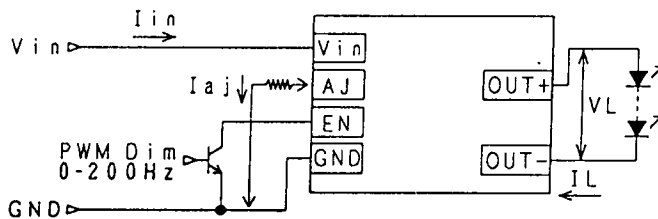
VR	Iaj	IL
51.0 kΩ	0.2mA	80 %
10.0 kΩ	0.6mA	40 %
3.3 kΩ	0.9mA	0 %

Conditions : Ta = 25°C, LED load = 3W LED*3pcs
Iaj is changeable by input voltage .

■ PWM Dimming



■ Typical Application Circuit



*For adjusting output current ,
set resistance between AJ and GND .
(Maximum output current at AJ open .)

*If EN is connected to GND

METRIC	DIMENSIONS ARE IN MILLIMETERS
 THIRD ANGLE PROJECTION	TOLERANCE UNLESS OTHERWISE SPECIFIED
	1 PL +/- 0.2 2 PL +/- 0.20 ANGLE +/-
DRAWN BY L. WENGSTROM	APPVD BY DATE L.R. 12/23/08
- CAD DRAWING - MANUAL REVISIONS NOT PERMITTED	

JKL COMPONENTS CORPORATION

TITLE
DC-DC LED DRIVER MODULE

REV. NO.	DESCRIPTION/ECO NUMBER	APPVD DATE	SCALE	RELEASED DATE	REVISION DATE	REV. NO.	SHEET NO.
RELEASED		12/23/08	A	12/23/08			1 OF 1

SIZE FSCM NO. DRAWING NO.
A 55335 PL-0812-06