

■ Applications

- 1) Lighting for high brightness power LED
- 2) Constant current source

■ Features

- 1) High efficiency and thin package
- 2) Open loop peak current controller
- 3) Terminal for adjustable output current
- 4) PWM dimming capability
- 5) 3pcs 1W LEDs on DC12V driving capability  
6pcs 1W LEDs on DC24V driving capability

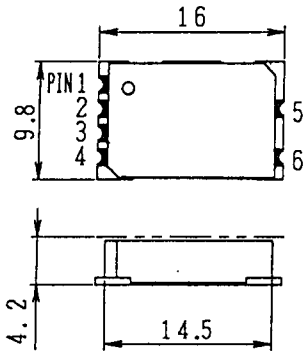
■ Maximum rating and Environment conditions

Item	Symbol	Rating	Unit
DC Input Voltage	Vin	8 ~ 28	V
Input Power	Pin	0 ~ 9	W
Operating Temperature	Ta	0 ~ 60	°C
Storage Temperature	Ts	0 ~ 80	°C
Relative Humidity	RH	5 ~ 95	%

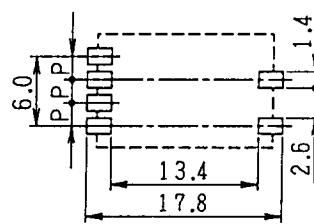
■ Electrical Characteristics Conditions : Ta = 25°C.LED load = 1W LED\*3pcs

Item	Symbol	Vin = 12V	Vin = 24V	Unit
Input Current	Iin	255	135	mA
Output Current	IL	300	300	mA
Switching Frequency	fsw	145	495	kHz

■ Shapes and Dimensions (Unit:mm)



Recommended soldering pad design



P = 2.0  
Setting the line under this part is prohibited.

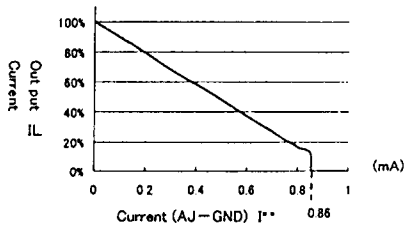
■ Terminal numbers and functions

No.	Symbol	Description
1	Vin	Vin (8~28V)
2	AJ	Current Adjust
3	EN	EN signal (L-off)
4	GND	GND ( 0 V )
5	OUT+	Output(+)
6	OUT-	Output(-)

■ Warning

Don't set the line under this part .  
Short circuit is possibility .

■ Output Current Adjustment

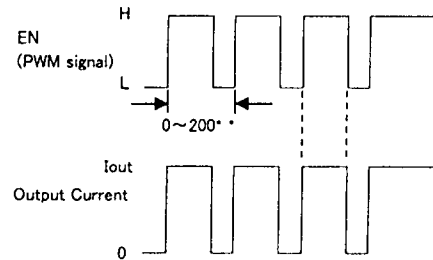


VR vs IL		
VR	Iaj	IL
8.0 kΩ	0.2mA	80 %
6.0 kΩ	0.5mA	50 %
2.7 kΩ	0.9mA	0 %

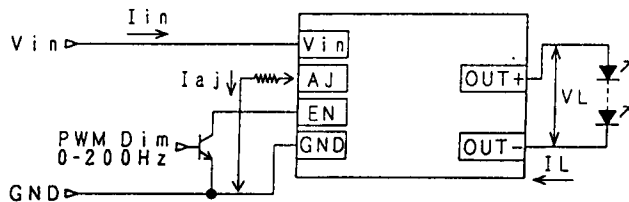
Conditions : Ta = 25°C.LED load = 1W LED\*3pcs

Iaj is changeable by input voltage .

■ PWM Dimming



■ Typical Application Circuit



\*For adjusting output current ,  
set resistance between AJ and GND .  
(Maximum output current at AJ open .)

\*If EN is connected to GND,  
output is off . ( low - off )

METRIC

DIMENSIONS ARE IN MILLIMETERS

TOLERANCE UNLESS OTHERWISE SPECIFIED

1 PL +/- 0.2

2 PL +/- 0.20

ANGLE +/-

THIRD ANGLE PROJECTION

DRAWN BY L. WENGSTROM

APP'VD BY L.W.

DATE 1/6/09

- CAD DRAWING -

MANUAL REVISIONS NOT PERMITTED

**JKL** COMPONENTS CORPORATION

TITLE DC-DC LED DRIVER MODULE

REV. NO.	DESCRIPTION/ECO NUMBER	APP'VD DATE	SCALE	FSCM NO.	RELEASED DATE	DRAWING NO.	REVISION DATE	REV. NO.	SHEET
RELEASED		1/6/09	A	55335	1/6/09	PL-0812-07			1 OF 1