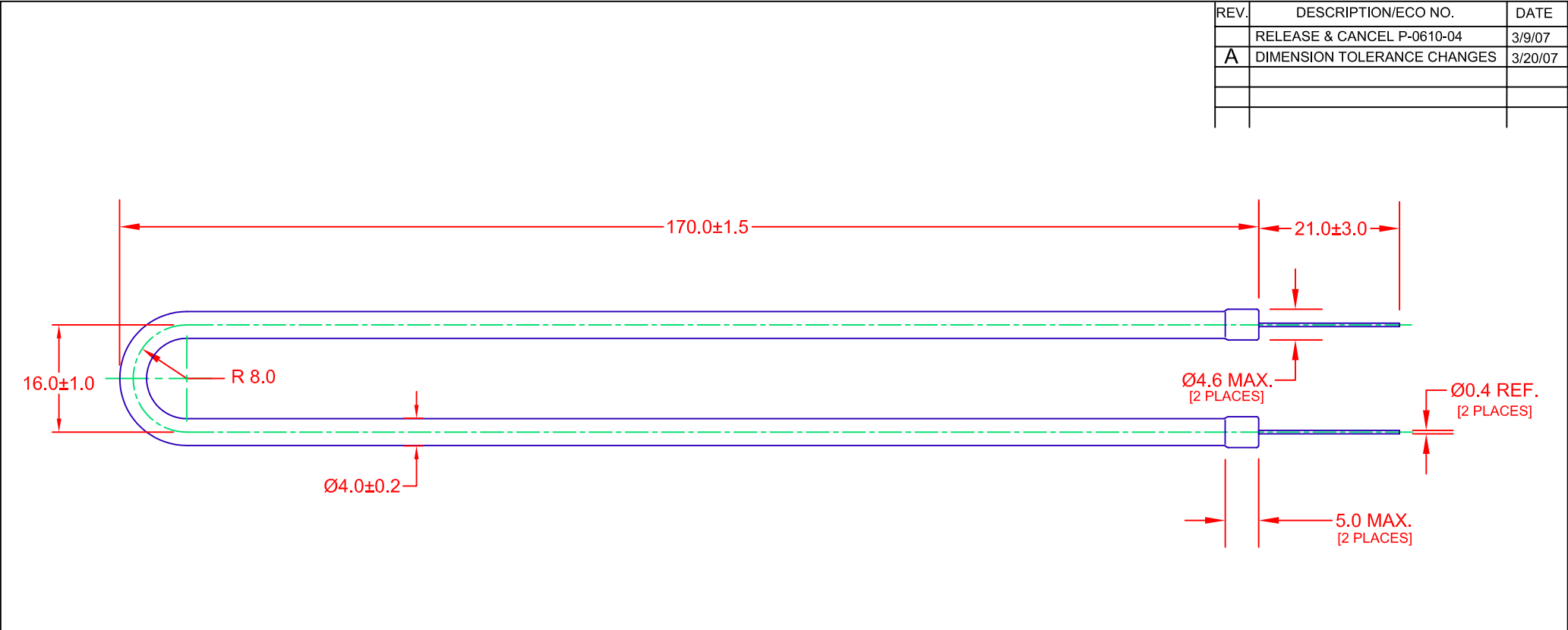


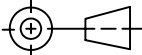
REV.	DESCRIPTION/ECO NO.	DATE
	RELEASE & CANCEL P-0610-04	3/9/07
A	DIMENSION TOLERANCE CHANGES	3/20/07



JKL PART NO.: BF41U16170-29B

COLOR	STARTING CIRCUIT VOLTAGE VS (Vrms)	OPERATING LAMP VOLTAGE VL (Vrms)	OPERATING LAMP CURRENT IL (mAmps)	BRIGHTNESS (CANDELA/m2)	*RATED LIFE (HRS)
x = .313 y = .303	1165 @ 0°C	630	5mA ± 1	16,000 TYP.	20,000 MIN.

\*NOTE: RATED LIFE IS DEFINED AS THE POINT AT WHICH THE INTENSITY BECOMES 50% OF THE INITIAL RATING.

<div>METRIC</div> <div></div> <div>THIRD ANGLE PROJECTION</div>	DIMENSIONS ARE IN MILLIMETERS		<div>JKL COMPONENTS CORPORATION</div> <div>TITLE CCFL U SHAPE COLD CATHODE FLUORESCENT LAMP</div>			
	TOLERANCE UNLESS OTHERWISE SPECIFIED 1 PL +/- REF. 2 PL +/- ANGLE +/-					
DRAWN BY L. WENGSTROM	APPV'D BY L.R.	DATE 3/20/07	SIZE A	FSCM NO. 55335	DRAWING NO. BF41U16170-29B	
- CAD DRAWING - MANUAL REVISIONS NOT PERMITTED			SCALE NONE	RELEASED DATE 3/9/07	REVISION DATE 3/20/07	REV. NO. A SHEET 1 OF 1