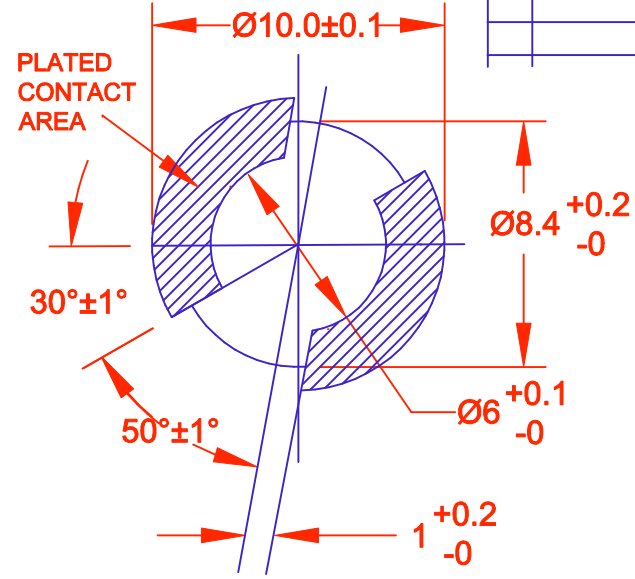
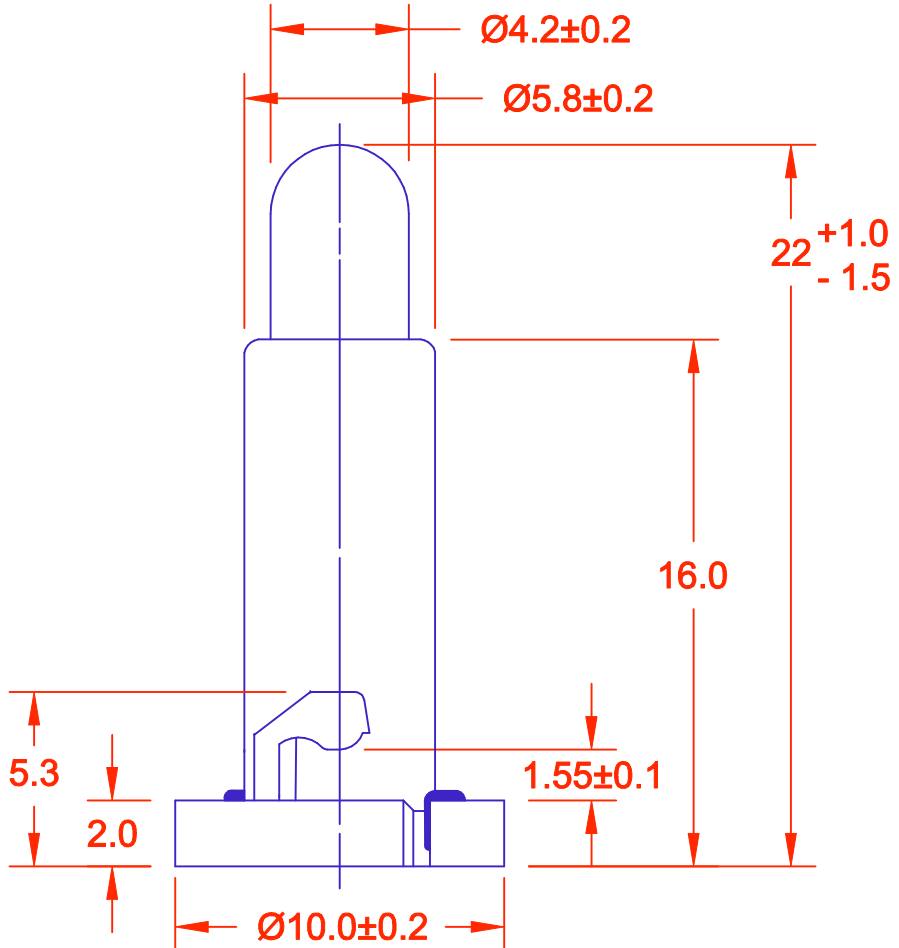
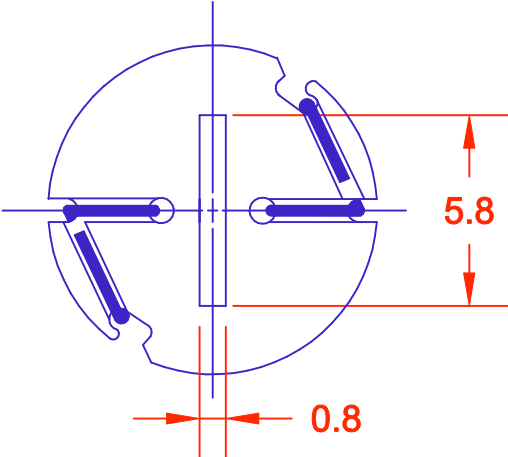


REV.	DESCRIPTION/ECO NO.	DATE
	RELEASED	9/18/01
	DIM CHANGES PER	10/1/01
A	STANLEY REQ.	



PC BOARD PUNCH PATTERN
BOARD THICKNESS 1.6 ± 0.1



JKL PART NUMBER: DNW1-DW48/GRA/22MM
 JKL LAMP NUMBER: DW48
 VOLTS RATED: 14.0
 AMPS +/- 10%: .040
 *MSCP +/- 25%: .150
 *LUMENS +/- 25%: 1.89
 AVG. LIFE HOURS: 5,000 (DC)**
 FILAMENT TYPE: C-2V
 *LAMP RATED ONLY WITHOUT BASE
 **DERIVED FROM ACCELERATED TESTING
 BASE COLOR: GRAY

 THIRD ANGLE PROJECTION	METRIC DIMENSIONS ARE IN MILLIMETERS	JKL COMPONENTS CORPORATION				
	TOLERANCE UNLESS OTHERWISE SPECIFIED 1 PL +/- 0.2 2 PL +/- 0.20 ANGLE +/- 0					TITLE 22MM GRAY NEO-WEDGE BASE WITH T-1 1/4 DW48 LAMP
DRAWN BY L. WENGSTROM	APPVD BY J. KAHL	DATE 10/1/01	SIZE A	FSCM NO. 55335	DRAWING NO. DNW1-DW48/GRA/22MM	REV. A
- CAD DRAWING - MANUAL REVISIONS NOT PERMITTED			SCALE NONE	RELEASED DATE 9/18/01	REVISION DATE 10/1/01	SHEET 1 OF 1