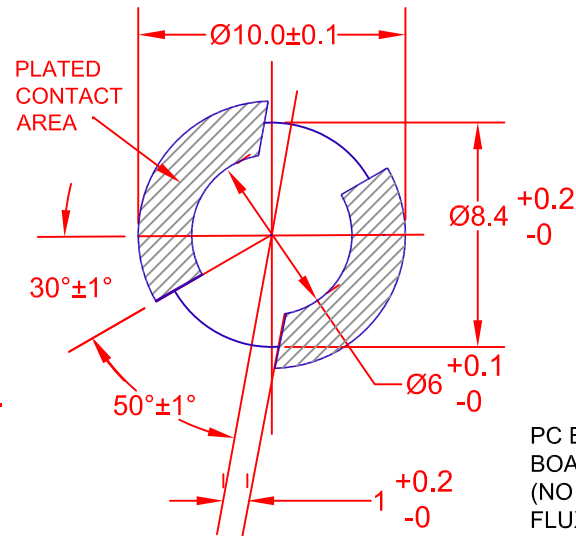
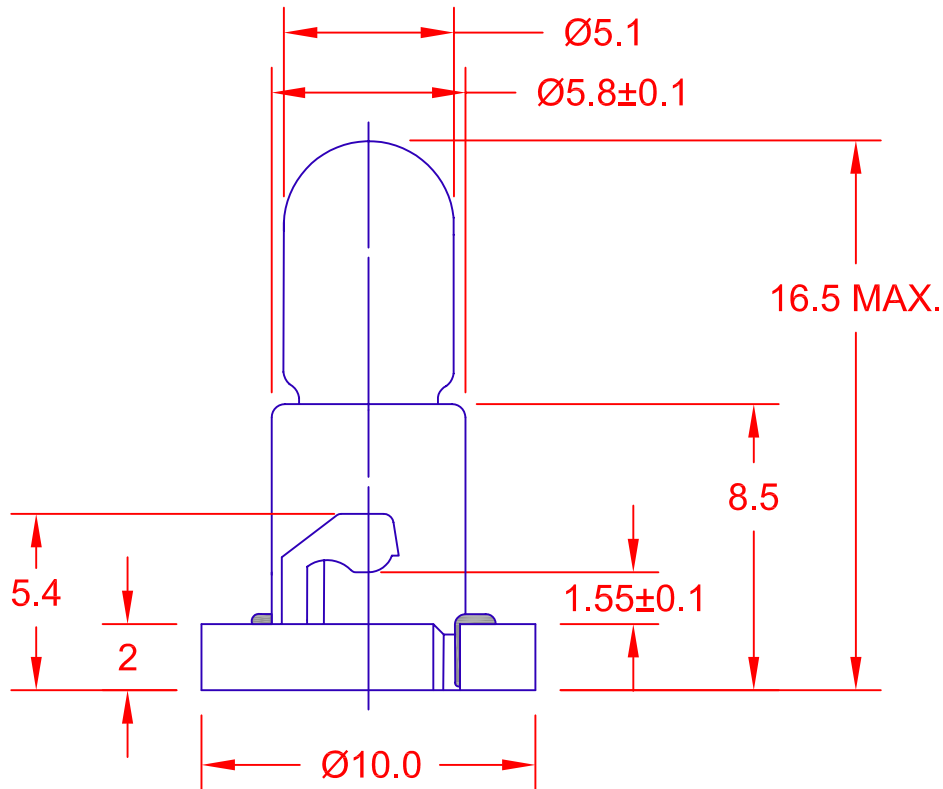


REV.	DESCRIPTION/ECO NO.	DATE
	RELEASE AND CANCEL P-0011-08	11/7/01
A	CHNG. DIM. LINE POSITION	11/19/01
B	CHNG. TO (Pb) FREE ASSEMBLY	3/25/05



PC BOARD PUNCH PATTERN  
BOARD THICKNESS 1.6 ± 0.1mm.  
(NO TREATMENT, SUCH AS APPLICATION OF FLUX, SHALL BE DONE.)

JKL PART NO.: ENW2-EW62/BLA\*\*\*

LAMP NUMBER: EW62S\*\*

VOLTS RATED	AMPS ± 10%	*MSCP ± 25%	*LUMENS ± 25%	AVERAGE LIFE HRS.	FILAMENT TYPE
28.0	.065	.500	6.29	5,000 DC	C-2F

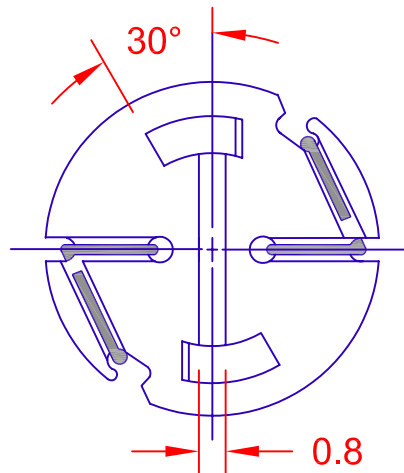
\* LAMP RATING ONLY WITHOUT BASE AND FILTER.

\*\* LAMP GLASS LEAD (Pb) FREE.

\*\*\* LAMP AND BASE ASSEMBLY LEAD (Pb) FREE.

CONTACT JKL FOR LEAD (Pb) LOT IDENTIFICATION.

BASE NUMBER: ENW2/BLA  
BASE COLOR: BLACK



METRIC		DIMENSIONS ARE IN MILLIMETERS		JKL COMPONENTS CORPORATION			
 THIRD ANGLE PROJECTION	TOLERANCE UNLESS OTHERWISE SPECIFIED		<b>TITLE</b> T-1 1/2 ENW2 NEO-WEDGE BLACK BASE WITH 28 VOLT LAMP				
	1 PL +/- 0.2 2 PL +/- 0.20 ANGLE +/- 0						
DRAWN BY L. WENGSTROM	APPV'D BY J. KAHL	DATE 3/25/05	SIZE A	FSCM NO. 55335	DRAWING NO. <b>ENW2-EW62/BLA</b>		
- CAD DRAWING - MANUAL REVISIONS NOT PERMITTED			SCALE NONE	RELEASED DATE 11/7/01	REVISION DATE 3/25/05	REV. NO. <b>B</b>	SHEET 1 OF 1