

MR16 PRODUCT LINE

JKL

www.jkllamps.com

JKL Components Corporation offers a selection of MR16 lamps to meet a variety of design requirements. High intensity, focused, color temperatures from warm to blue/white, spot and flood light, single LED chip or multiple (up to 18) LEDs. Two sockets are available. Detailed PDF drawings for every part are on our website - jkllamps.com.

HALOGEN MR16

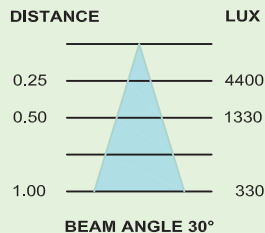
Economic solution for halogen applications.

- Excellent Value
- Bright White Light
- Dimmable



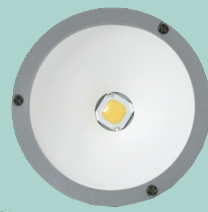
Part Number	AC/DC	Angle	Kelvin Color	Wattage
MR16-12/H12	12V	12°	2800	12
MR16-12/H30	12V	30°	2800	12

18 LED MR16



- Available in a range of AC/DC Voltages
- Meets Department of Energy Requirements

Part Number	AC/DC	Angle	Kelvin Color	Wattage
Z-MR16-12/W1	12V	30°	8500-9500	1.2
Z-MR16-24/W1	24V	30°	8500-9500	1.2
Z-MR16-110/W1	110V	30°	8000-13000	0.8



Z-MR16-5W-X series

- High power LED chip
- 12 Volt - 5 Watt
- Spot to flood
- Range of whites
- AC/DC Compatible



5-WATT LED MR16

Part Number	Angle	Kelvin Color
Z-MR16-5W-1	10°	6800-7200
Z-MR16-5W-2	10°	6400-6800
Z-MR16-5W-3	10°	6000-6400
Z-MR16-5W-4	10°	3700-3900
Z-MR16-5W-5	10°	2900-3100
Z-MR16-5W-6	10°	2700-2900
Z-MR16-5W-7	38°	6800-7200
Z-MR16-5W-8	38°	6400-6800
Z-MR16-5W-9	38°	6000-6400
Z-MR16-5W-10	38°	3800-4100
Z-MR16-5W-11	38°	3700-3900
Z-MR16-5W-12	38°	2900-3100
Z-MR16-5W-13	38°	2700-2900
Z-MR16-5W-14	60°	6800-7200
Z-MR16-5W-15	60°	6400-6800
Z-MR16-5W-16	60°	6000-6400
Z-MR16-5W-17	60°	3700-3900
Z-MR16-5W-18	60°	2900-3100
Z-MR16-5W-19	60°	2700-2900

MR16 SOCKETS 6" LEAD



Part Number	Mounting
2993-G5	Brass Insert for Mount
2993-G6	Standard Mounting

SPECIALS AVAILABLE



- Medical
- Aircraft
- Optical
- Projector



JKL[®] Lighting

Technologies
Components www.jkllamps.com
Corporation 800-421-7244



RoHS Compliant
ISO9001 Certified