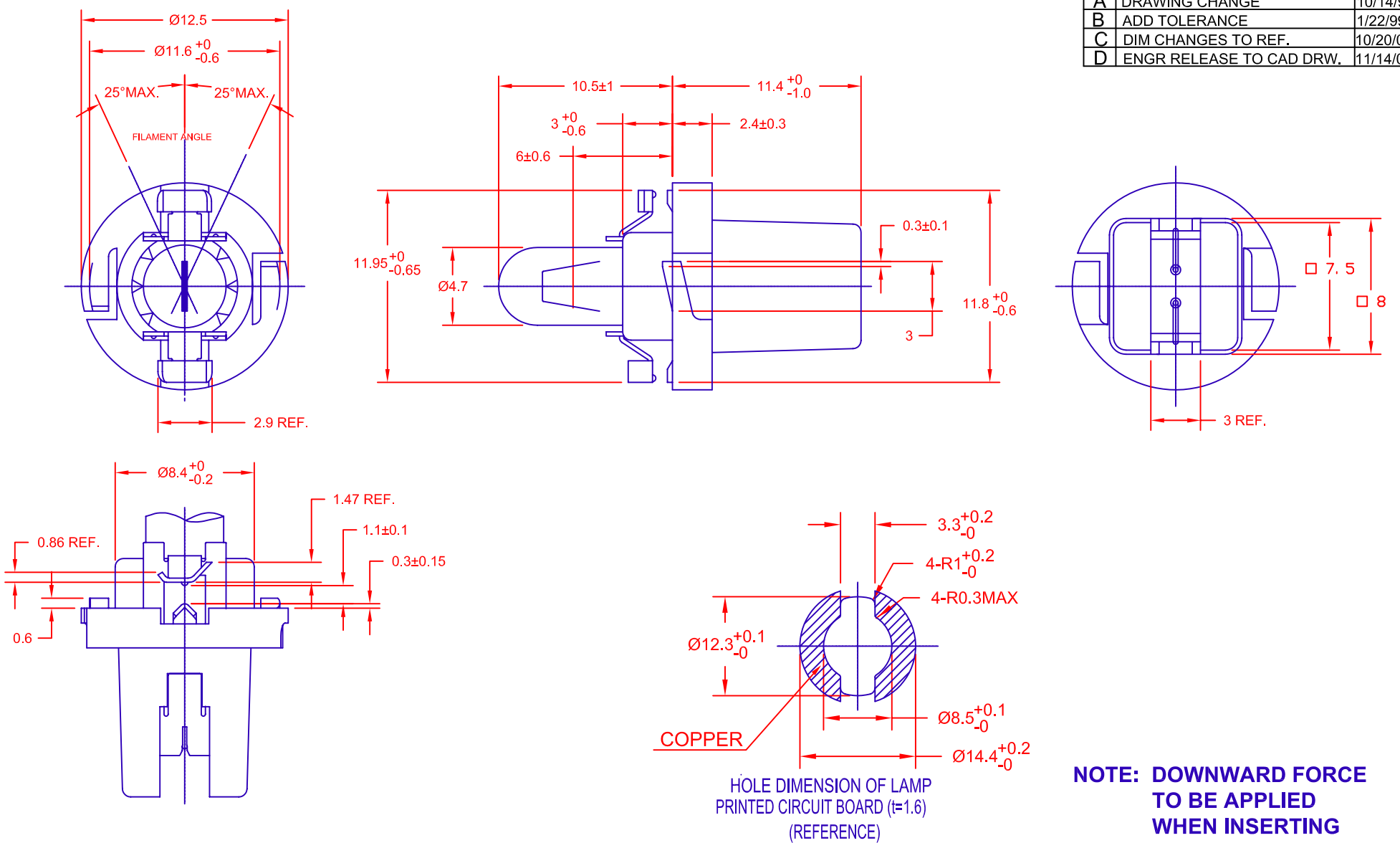


REV.	DESCRIPTION/ECO NO.	DATE
	RELEASED	8/6/00
A	DRAWING CHANGE	10/14/98
B	ADD TOLERANCE	1/22/99
C	DIM CHANGES TO REF.	10/20/00
D	ENGR RELEASE TO CAD DRW.	11/14/06



**NOTE: DOWNWARD FORCE TO BE APPLIED WHEN INSERTING INTO P.C. BOARD.**

JKL PART NO.: WWT1-EW10/WHI

LAMP NUMBER: EW10						
VOLTS RATED	AMPS $\pm 10\%$	WATTS	*MSCP $\pm 25\%$	*LUMENS $\pm 25\%$	AVERAGE LIFE HRS.	FILAMENT TYPE
14.0	.100	1.4	.500	6.29	5,000 DC	C-2F

\*LAMP RATING ONLY WITHOUT BASE

**BASE COLOR: WHITE**

METRIC		DIMENSIONS ARE IN MILLIMETERS		JKL COMPONENTS CORPORATION			
THIRD ANGLE PROJECTION		TOLERANCE UNLESS OTHERWISE SPECIFIED		TITLE			
		1 PL +/- 0.2		WELDED WIRE TERMINAL LAMP IN BASE			
		2 PL +/- 0		SIZE	FSCM NO.	DRAWING NO.	REV.
		ANGLE +/- 0		A	55335	WWT1-EW10/WHI	D
DRAWN BY		APPV'D BY DATE		SCALE	RELEASED DATE	REVISION DATE	SHEET
L. WENGSTROM		J. KAHL 11/14/06		NONE	8/6/00	11/14/06	1 OF 1
MANUAL REVISIONS NOT PERMITTED							