

## FEATURES

12VDC

IP67

50,000 Life Hours/5 Year Warranty

115 lm/W High Efficacy

Operating Temperature -20°C to +70°C

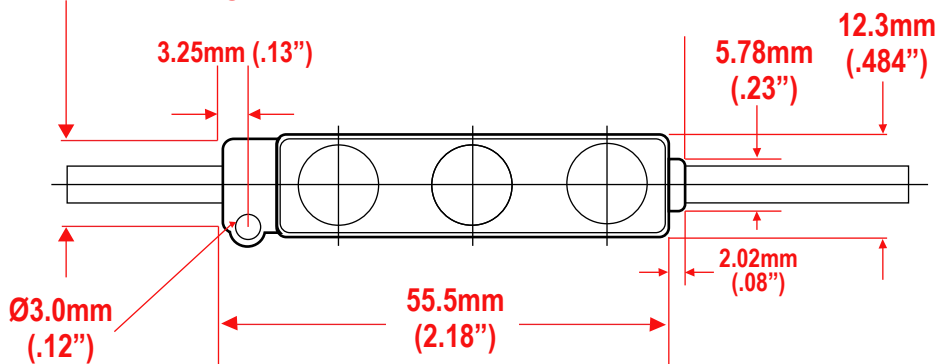
170° Wide Beam

50 Modules per Strand

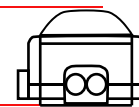
## 170° WIDE BEAM HIGH-OUTPUT LED CHANNEL for SMALL/MEDIUM CHANNEL LETTERS and SIGN BOXES



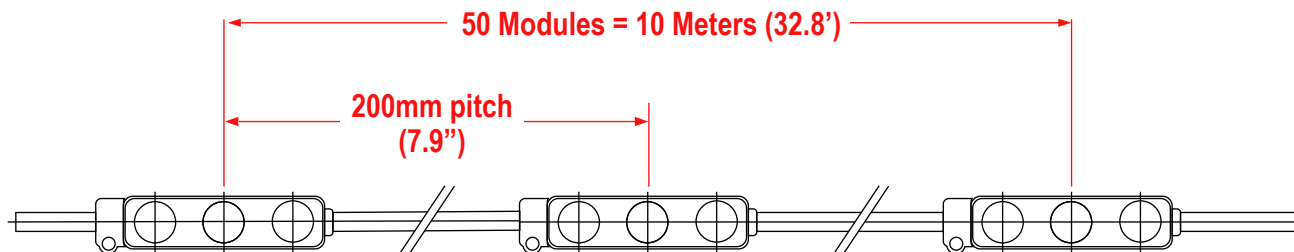
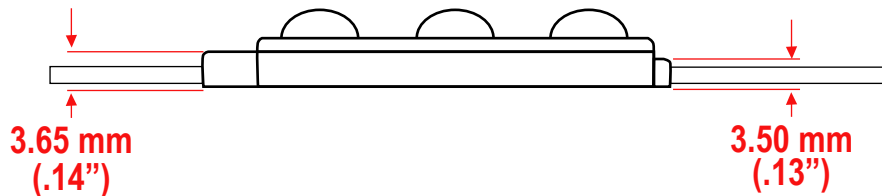
12.6mm (.496") edge to edge  
10mm (.393") edge to center hole



8.45 mm  
(.333")



Note: Height is 8.98 mm (.35")  
with mounting tape attached



### NOTES:

Mounting can be accomplished with double sided tape that is on the backside of modules. Screw holes are also present. Wire with Red Stripe is Positive Input.

Use no more than 50 modules in series.

Take care to prevent exposed wire on the ends.

**JKL** <sup>®</sup> **US**  
**E339601**

JKL Part Number	Input Voltage	Power per Module	CCT	Beam Angle	CRI	Lumen Flux per Module	Lumen Efficacy	No. Modules Per Pack
ZM-333-CWHO	12V DC	1.00W	6500° K	170°	Ra80	115 lm	115 lm/W	50 pc/32.8' (10 Meters)

			<b>METRIC</b>		DIMENSIONS ARE IN mm (INCHES)		<b>JKL</b> COMPONENTS CORPORATION		
			THIRD ANGLE PROJECTION		TOLERANCE UNLESS OTHERWISE SPECIFIED		TITLE		
					1 PL +/- REF.		WIDE BEAM HIGH OUTPUT LED CHANNEL MODULE		
					2 PL +/- REF.				
			DRAWN BY		APP'D BY		SIZE		
			S Newton		JV		A		
					DATE		FSCM NO.		
					5/10/23		55335		
							DRAWING NO.		
							ZM-333-CWHO		
							SCALE		
							NONE		
							RELEASED DATE		
							5/10/23		
							REVISION		
							REV. NO.		
							SHEET		
							1 OF 1		