

ALUMILINE® LED FIXTURE

Features

- Low Voltage 24V DC
- RoHS Compliant
- No UV Emission
- Low Profile
- IP66
- Easy Bar to Bar Connection and Mounting
- Diffused Lens Eliminates Hot Spots
- Optional Customized Lengths
- Ideal for Case Lighting



Maximum Ratings

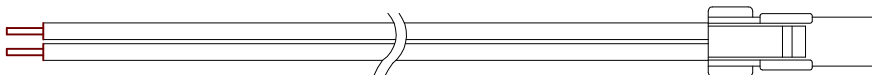
Parameter	Symbol	Rating	Units
LED Junction Temperature	T _J	125	°C
Operating Temperature	T _{opr}	-20 ~ +50	°C
Storage Temperature	T _{stg}	-40 ~ +85	°C
Input Voltage	V _{in} DC	20 - 30	Volts

Accessories

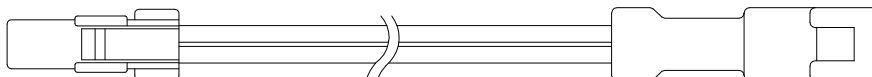
- ZPS-2435: 24V, 35 Watt Power Supply
- ZPS-2460: 24V, 60 Watt Power Supply
- ZDM-01: PWM LED Dimmer

Note: ZPS-2435 and ZPS-2460 require use of wire nuts for connections.

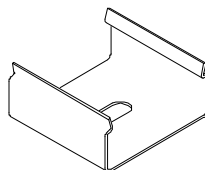
Mating Components



ZWBL-1000-I: Input Connector



ZWBL-CH-J: Jumper Connector

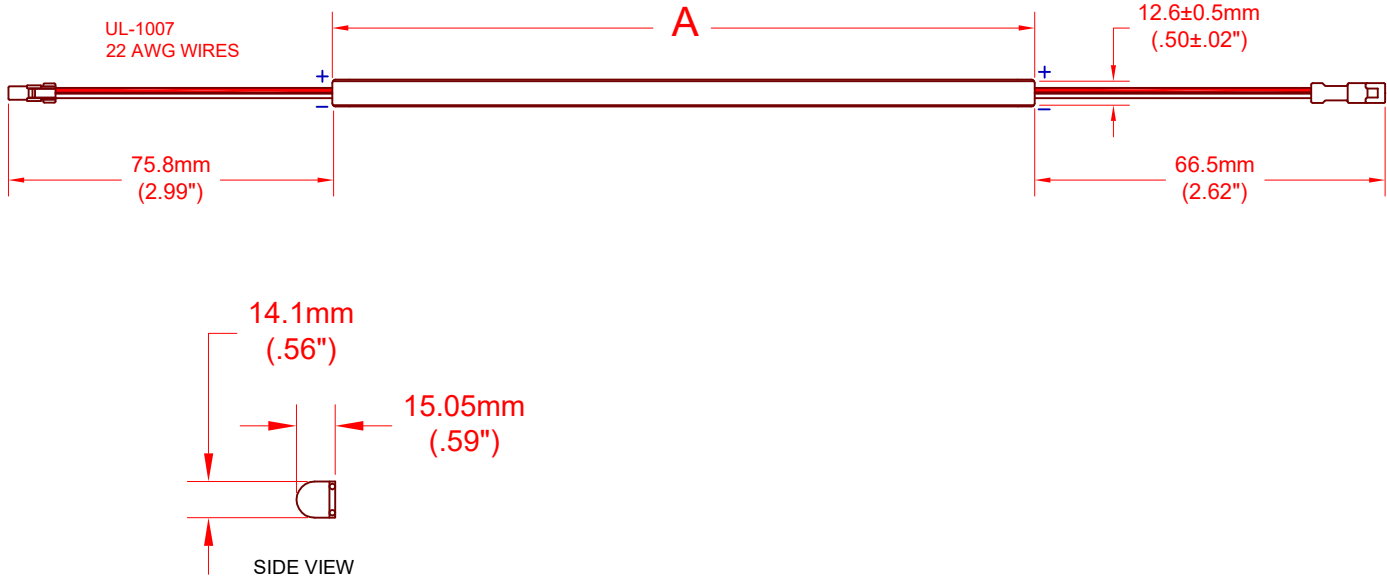


ZWF-12-C: Mounting Clip

			METRIC THIRD ANGLE PROJECTION		DIMENSIONS ARE MILLIMETER (INCH) TOLERANCE UNLESS OTHERWISE SPECIFIED 1 PL +/- REF. 2 PL +/- REF. ANGLE +/- REF.		JKL COMPONENTS CORPORATION											
							TITLE ALUMILINE® 24V DC LED FIXTURE											
			DRAWN BY L. WENGSTROM		APPV'D BY DATE S.C. 5/30/17		SIZE A		FSCM NO. 55335		DRAWING NO. ZWL-MULTI							
REV. NO.			DESCRIPTION/ECO NUMBER			APPV'D DATE			SCALE NONE		RELEASED DATE 5/30/17		REVISION DATE		REV. NO.		SHEET 1 OF 2	
RELEASED			5/30/17			- CAD DRAWING - MANUAL REVISIONS NOT PERMITTED												

ALUMILINE® LED FIXTURE

Dimensions



Electro-Optical Characteristics (Ta = 25°C)

JKL Part Number	Color	Dimension A ± 5.0mm (±0.2 inch)	Number LEDs	Power (W)	Current (mA)	CCT (K)	Lumen Flux (lm)
ZWL-511-24CW	Cool White	511.0 (20.10)	60	6	250	5700	600
ZWL-511-24NW	Neutral White	511.0 (20.10)	60	6	250	4000	570
ZWL-511-24WW	Warm White	511.0 (20.10)	60	6	250	3000	540
ZWL-1011-24CW	Cool White	1011.0 (39.80)	120	12	500	5700	1200
ZWL-1011-24NW	Neutral White	1011.0 (39.80)	120	12	500	4000	1140
ZWL-1011-24WW	Warm White	1011.0 (39.80)	120	12	500	3000	1080